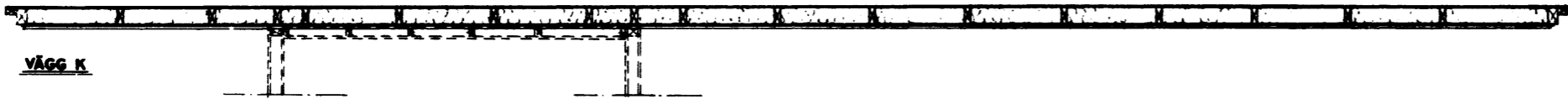
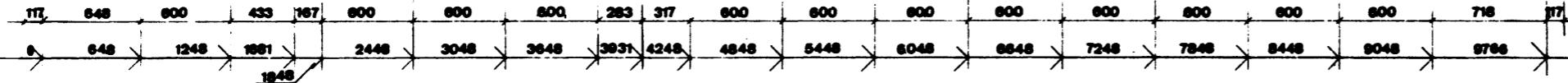
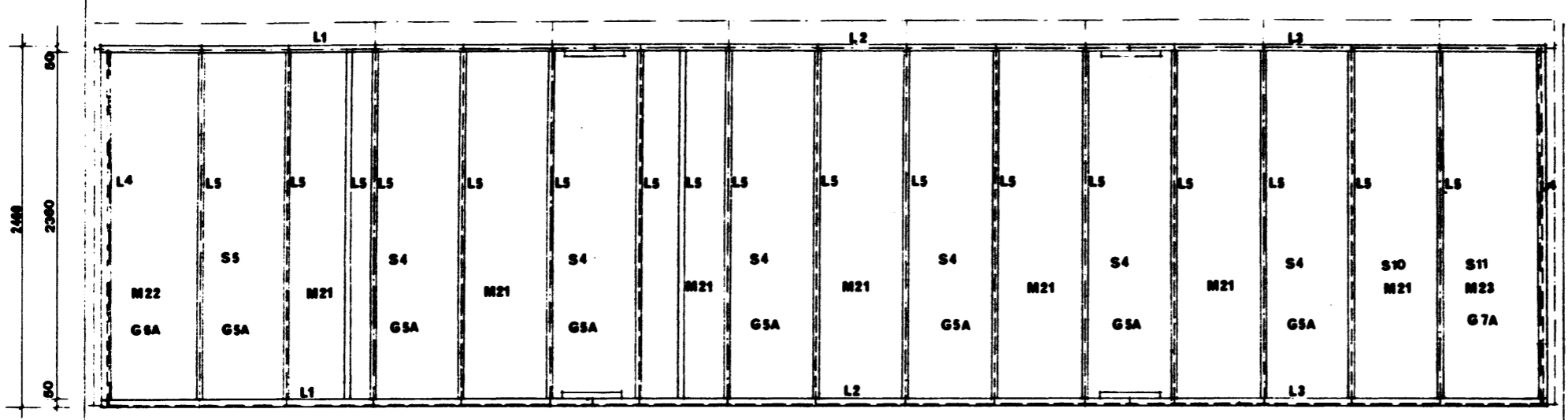
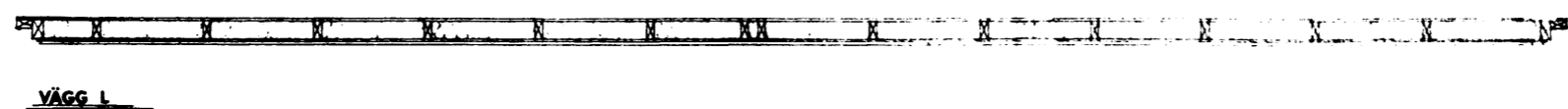
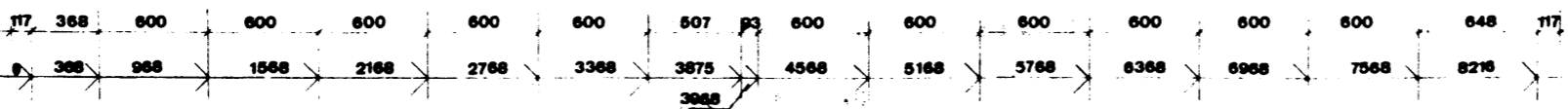
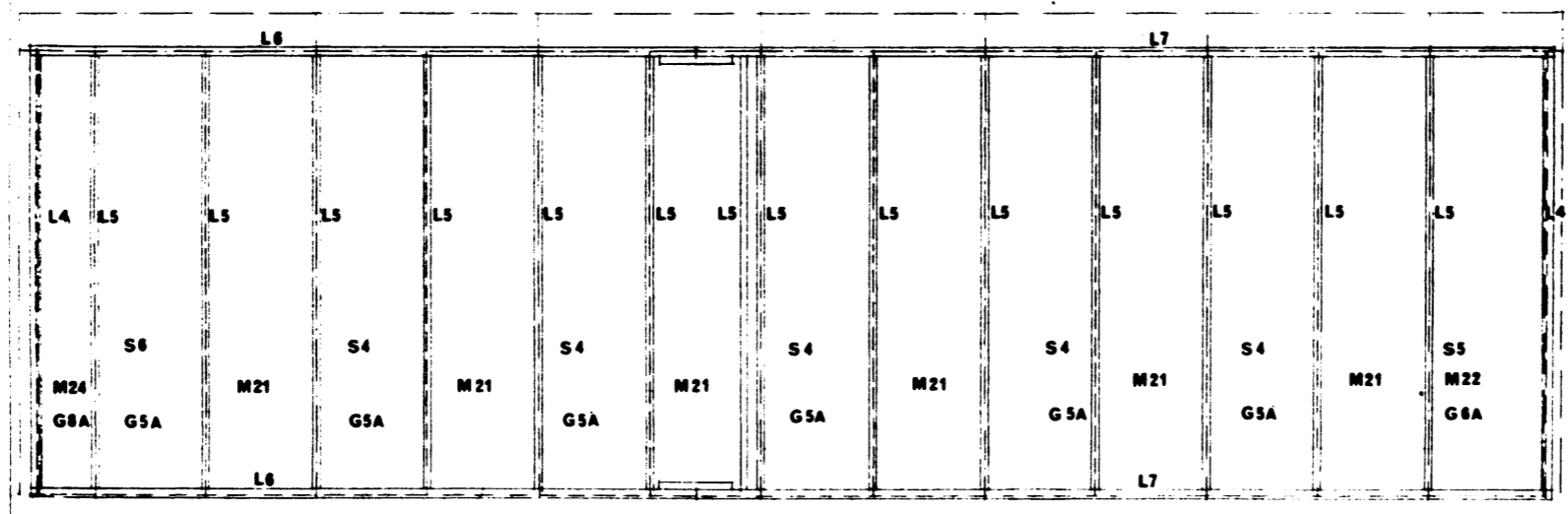


————— STOMME  
 - - - - - GIPSSKIVA, MASONITE  
 - - - - - SPÅNSKIVA



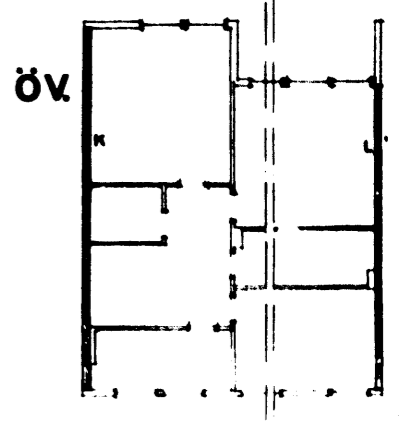
286 66  
 5 4 68 8  
 287 66  
 5 4 68 8  
 288 66  
 5 4 68 8  
 289 66  
 5 4 68 8



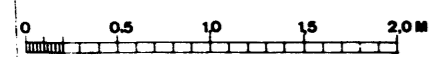
**MATR.**

LITTRA	SORT & KVAL	MÅTT I MM	MÄNGD
<b>VÄGG K</b>			
L 1	REGEL 49x95 MM V	3348	2
L 2	" " " V	3690	2
L 3	" " " V	2818	2
L 4	REGEL 61x95 MM V	2360	2
L 5	" " " V	2360	17
	" " " V FALLANDE		2,0 M
	" " " V		6,0 M
G 5A	GIPSSKIVA 13MM GNA.	1200 x 2435	7
G 6A	" " "	615 x 2435	1
G 7A	" " "	650 x 2435	1
S 4	SPÅNSKIVA 10MM	1200 x 2435	6
S 5	" " "	1220 x 2435	1
S 10	" " "	600 x 2435	1
S 11	" " "	660 x 2435	1
M 21	MASONITE 1/4" SPECIAL	1200 x 2600	7
M 22	" " "	712 x 2600	1
M 23	" " "	747 x 2600	1
	MINULLISOLERING 90MM	24 M <sup>2</sup>	6 KART.
<b>VÄGG L</b>			
L 4	REGEL 61x95 MM V	2360	2
L 5	" " " V	2360	14
	" " " V FALLANDE		1,0 M
L 6	REGEL 49x95 MM V	3593	2
L 7	" " " V	4623	2
	REGEL 36x57 MM V FALLANDE		6,0 M
G 5A	GIPSSKIVA 13MM GNA.	1200 x 2435	6
G 6A	" " "	615 x 2435	1
G 8A	" " "	300 x 2435	1
S 4	SPÅNSKIVA 10MM	1200 x 2435	5
S 5	" " "	1220 x 2435	1
S 6	" " "	912 x 2435	1
M 21	MASONITE 1/4" SPECIAL	1200 x 2600	6
M 22	" " "	712 x 2600	1
M 24	" " "	405 x 2600	1
	MINULLISOLERING 90MM	20 M <sup>2</sup>	5 KART.

ANV.  
 MASONITE MONT. ENL.  
 ByggAMA Rj 1.1 SAMT  
 MONT. MED 3MM FOG.  
 ÖVRIGT ARBETE ENL.  
 ByggAMA 1965.



19/10 1966. 416, 417, 418, 419.



Kv. Stadsvapnet, Stodssigillet,  
 Stadens Nycklar, Privilegiet  
 NORRA FÄLADEN, LUND

REV. 22.3.67 BS  
 REV. 3.7.67 F

REV. SIGN. NE ÖMÅTDE LIT.  
**HK 102** 3:23  
**GAVELVÄGGAR ÖV.**  
 BYGGNADS AB HARRY KARLSSON  
 BOX 23 LUND TEL. 0412/1778